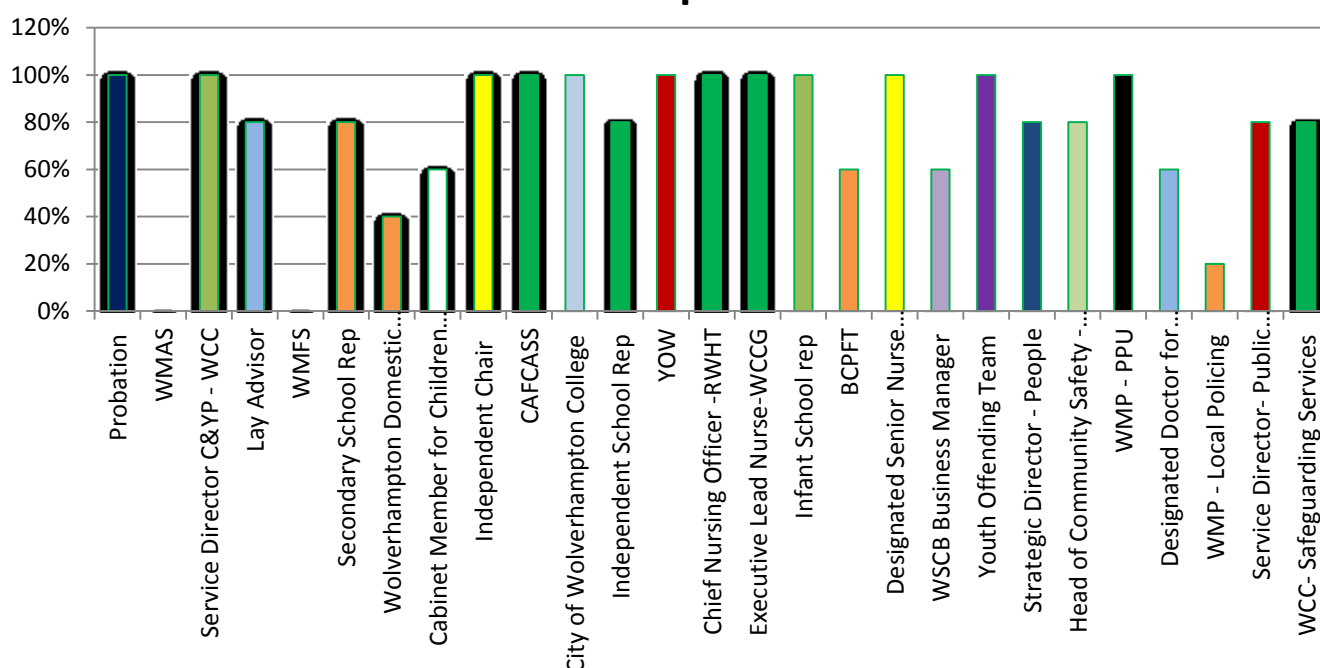




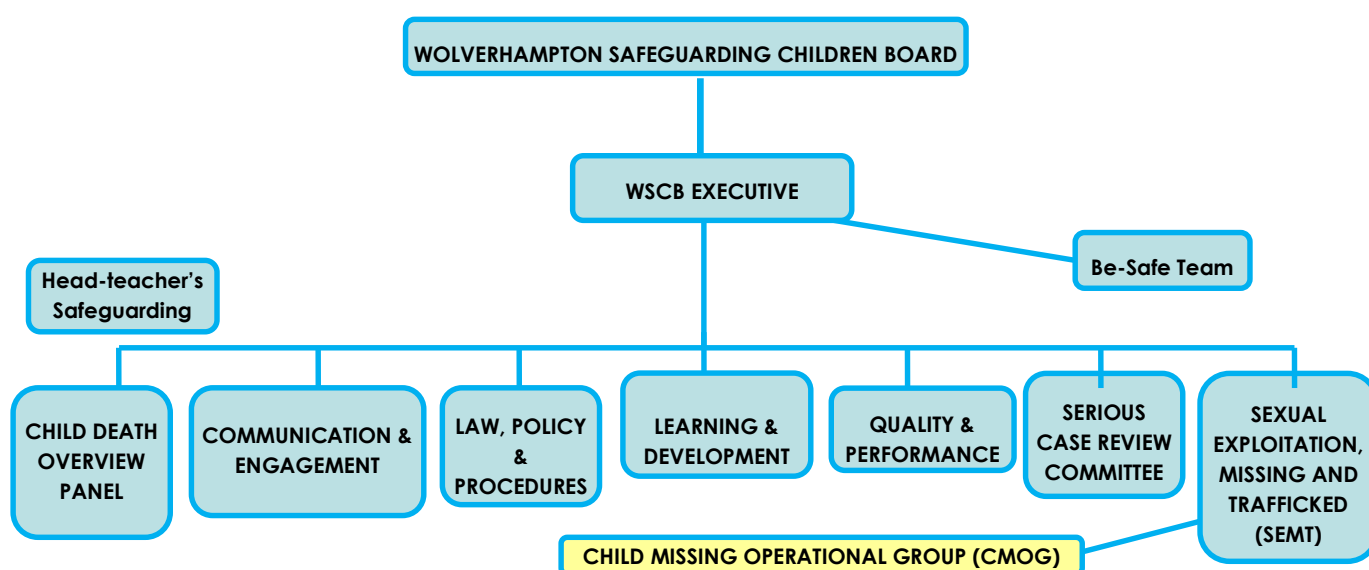
Wolverhampton Safeguarding Children Board

Annual Report 2015 – 2016

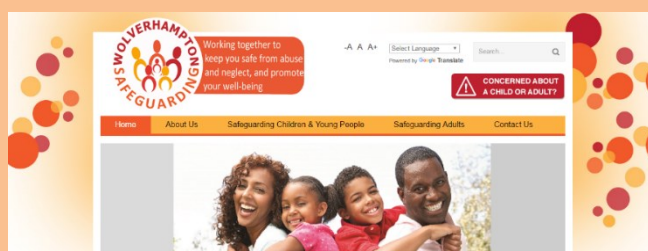
% Attendance - April 2015- March 2016



Wolverhampton Safeguarding Children Board structure



For more information about the
Safeguarding Children's Board, please
visit our new website, at
www.wolverhamptonsafeguarding.org.uk



Acronyms Explained

A & E	Accident & Emergency
BCPFT	Black Country Partnership Foundation Trust
BME	Black and Minority Ethnic
CAFCASS	Children and Families Court Advisory Support
CDOP	Child Death Overview Panel
CP	Child Protection
CPP	Child Protection Plan
CiN	Child in Need
CP-IS	Child Protection Information Sharing
CRH	Central Referral Hub
CRU	Central Referral Unit
CSE	Child Sexual Exploitation
CYPS	Children and Young People's Services
DBS	Disclosure & Barring Service
DHR	Domestic Homicide Review
FGM	Female Genital Mutilation
FM	Intensive Surveillance and Supervision'
FTE	Forced Marriage
IRO	Full-time Equivalent
IMR	Independent Review Officer
ISS	Independent Management Review
JSCG	Joint Safeguarding Children Group
LAC	Looked After Children
LADO	Local Authority Designated Officer (Allegations)
LSCB	Local Safeguarding Children Board
MARAC	Multi-agency Risk Assessment Conference
MACFA	Multi-agency Case File Audit
PFSIG	Private Fostering Special Intervention Group
PPU	Public Protection Unit
RWT	Royal Wolverhampton Trust
SCR	Serious Case Review
SEN	Special Education Need
SEMT	Sexual Exploitation, Missing and Trafficked
SWMPT	Staffordshire & West Midlands Probation Trust
VAWG	Violence Against Women & Girls
VCO	Voluntary & Community Organisations
WCC	Wolverhampton City Council
WDVF	Wolverhampton Domestic Violence Forum
WIFRN	Wolverhampton Inter-Faith & Regeneration Net.
WMP	West Midlands Police
WSAB	Wolverhampton Safeguarding Adults Board
WSCB	Wolverhampton Safeguarding Children Board
YOW	Youth Opportunities Wolverhampton
WTSC	Working Together to Safeguard Children
YJB	Youth Justice Board
YOT	Youth Offending Team
YOW	Youth Organisations Wolverhampton



Working together to
keep you safe from abuse
and neglect, and promote
your well-being

